


PCScan SQL Abfragen letzte Aktualisierung 26.03.2010

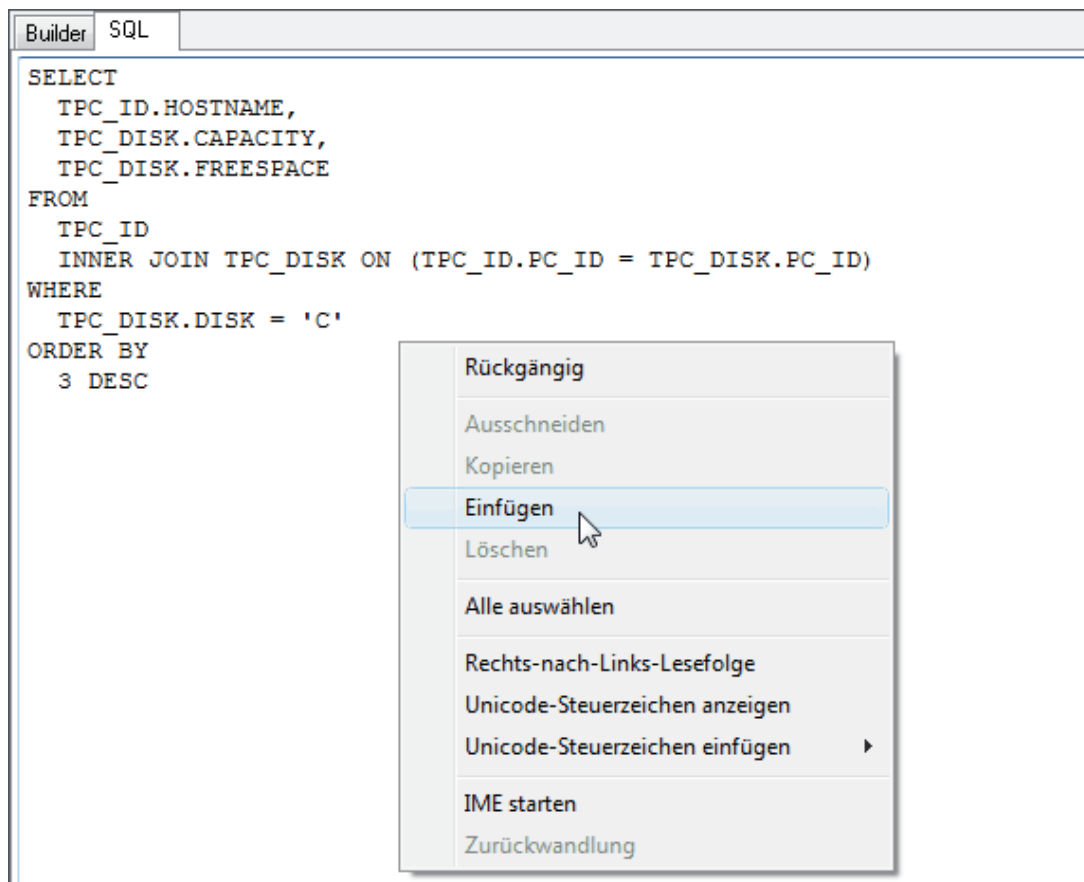
Die Abfrageliste wird ständig erweitert, also lohnt es sich öfter mal nach zu schauen.

Die Beispiele können einfach kopiert werden.

Auf das Neu Symbol klicken.. 

```
SELECT
  TPC_ID.HOSTNAME,
  TPC_DISK.CAPACITY,
  TPC_DISK.FREESPACE
FROM
  TPC_ID
  INNER JOIN TPC_DISK ON (TPC_ID.PC_ID = TPC_DISK.PC_ID)
WHERE
  TPC_DISK.DISK = 'C'
ORDER BY
  3 DESC
```

SQL einfügen..

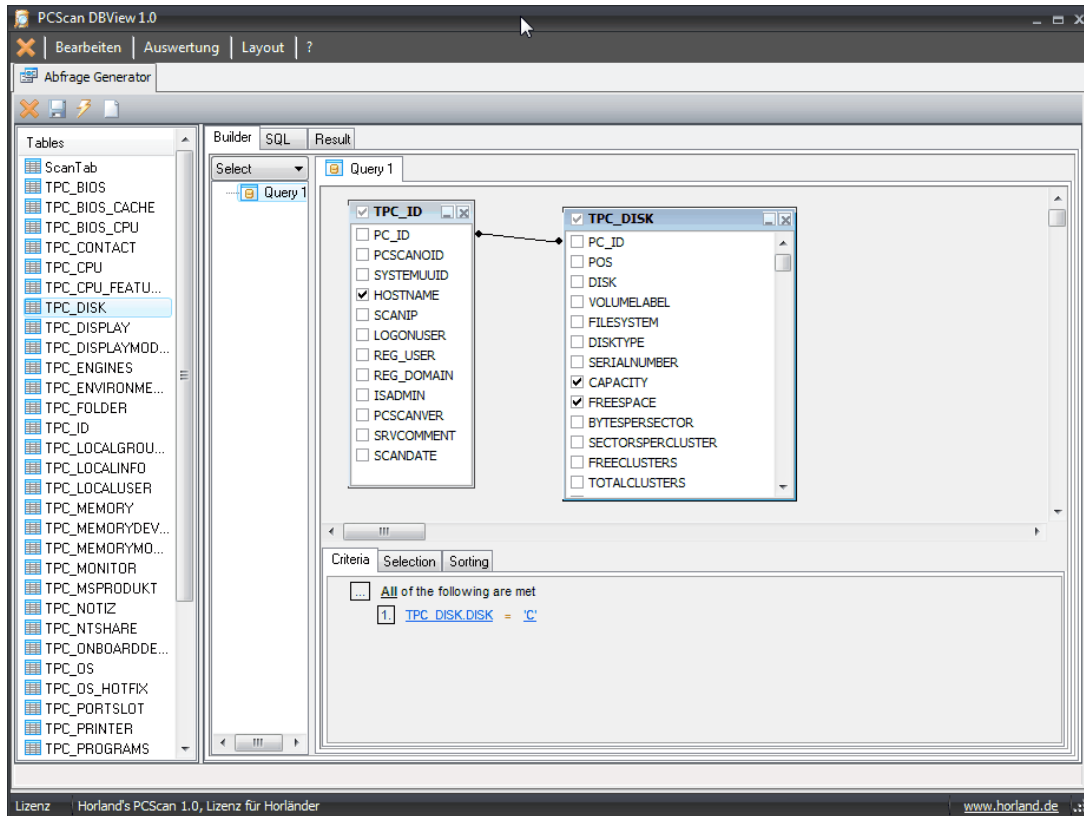


The screenshot shows a software window with two tabs: 'Builder' and 'SQL'. The 'SQL' tab is active, displaying the same SQL query as in the previous image. A context menu is open over the text, with the 'Einfügen' (Paste) option highlighted. The menu items are: Rückgängig, Ausschneiden, Kopieren, Einfügen, Löschen, Alle auswählen, Rechts-nach-Links-Lesefolge, Unicode-Steuerzeichen anzeigen, Unicode-Steuerzeichen einfügen, IME starten, and Zurückwandlung.

Nach dem Einfügen auf das Register Builder klicken...

Abfrage 1.

Festplattenplatz auf Laufwerk C



SELECT

```
TPC_ID.HOSTNAME ,  
TPC_DISK.CAPACITY ,  
TPC_DISK.FREESPACE
```

FROM

```
TPC_ID  
INNER JOIN TPC_DISK ON (TPC_ID.PC_ID = TPC_DISK.PC_ID)
```

WHERE

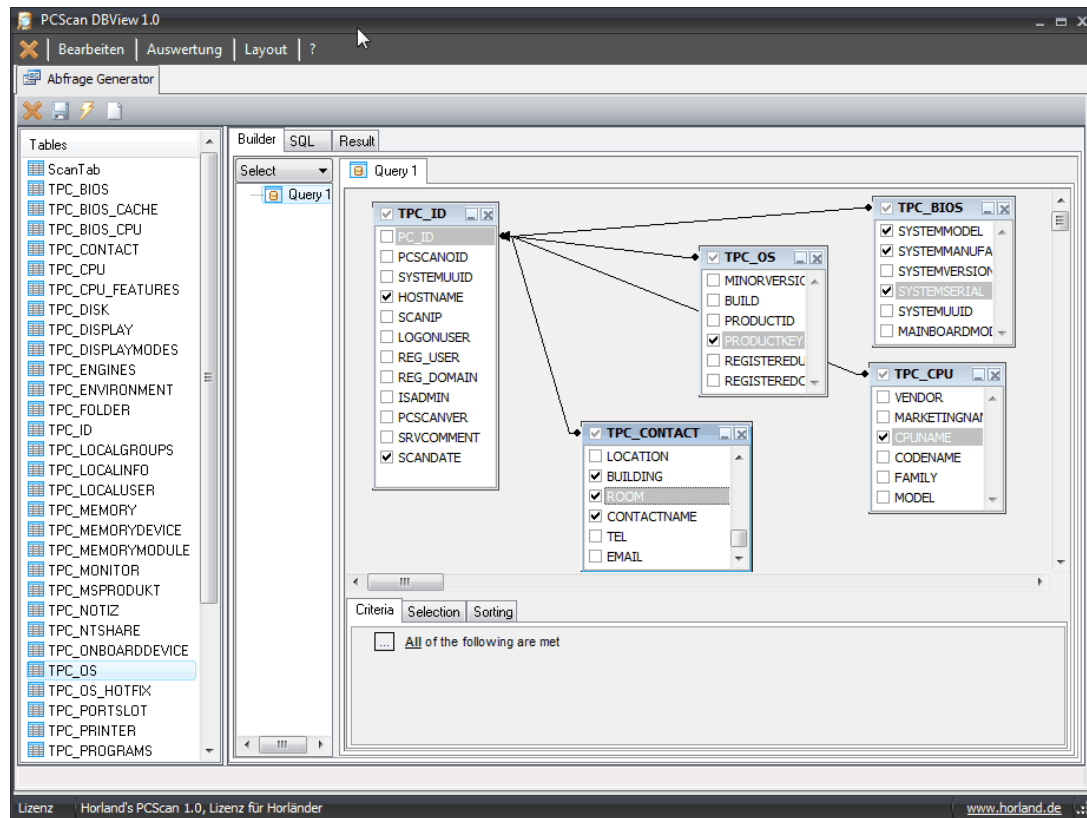
```
TPC_DISK.DISK = 'C'
```

ORDER BY

```
3 DESC
```

Abfrage 2.

Computerliste

**SELECT**

```

TPC_ID.HOSTNAME,
TPC_ID.SCANDATE,
TPC_CPU.CPUNAME,
TPC_BIOS.SYSTEMMODEL,
TPC_BIOS.SYSTEMMANUFACTURER,
TPC_BIOS.SYSTEMSERIAL,
TPC_OS.OSTYPE,
TPC_OS.SERVICEPACK,
TPC_OS.PRODUCTKEY,
TPC_CONTACT.COMPANY,
TPC_CONTACT.CONTACTNAME,
TPC_CONTACT.BUILDING,
TPC_CONTACT.ROOM

```

FROM

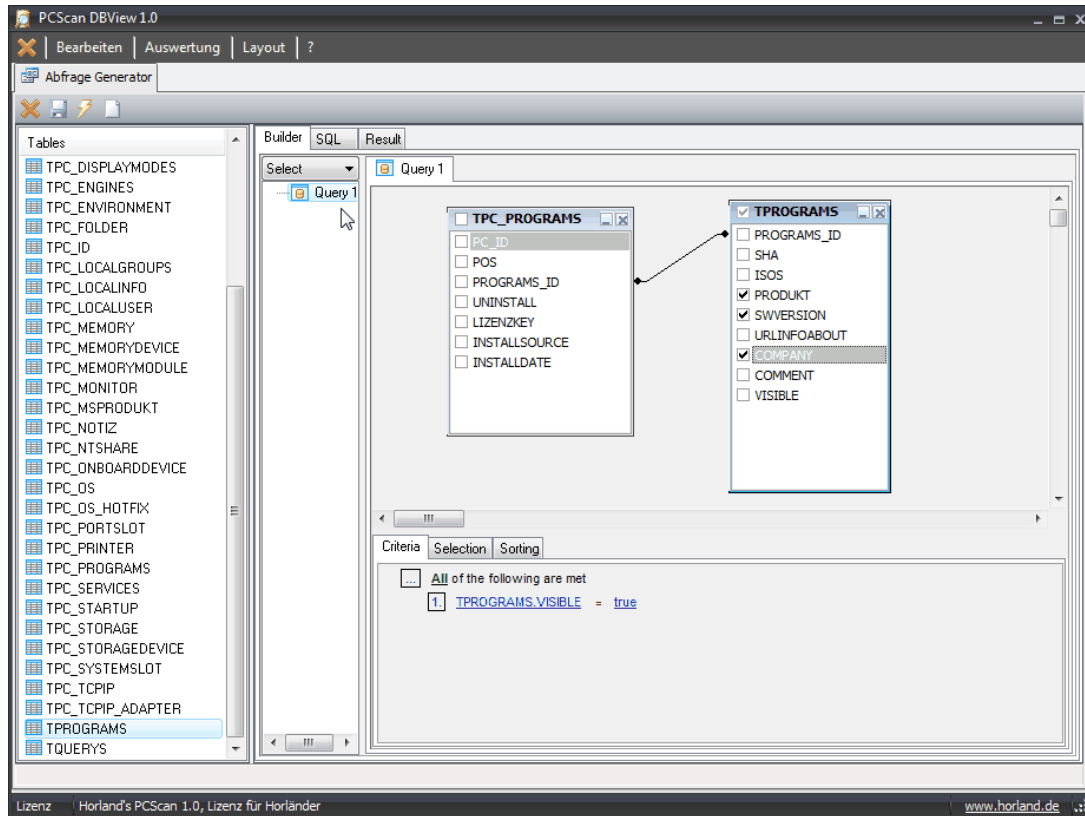
```

TPC_ID
INNER JOIN TPC_CPU ON (TPC_ID.PC_ID = TPC_CPU.PC_ID)
INNER JOIN TPC_BIOS ON (TPC_ID.PC_ID = TPC_BIOS.PC_ID)
LEFT OUTER JOIN TPC_CONTACT ON (TPC_ID.PC_ID = TPC_CONTACT.PC_ID)
INNER JOIN TPC_OS ON (TPC_ID.PC_ID = TPC_OS.PC_ID)

```

Abfrage 3.

Anzahl installierter Programme



Source field name	Name of output field	Aggregate	Grouping
TPC_PROGRAMS.PC_ID	ANZ	COUNT	
TPROGRAMS.PRODUKT	PRODUKT		Yes
TPROGRAMS.SWVERSION	SWVERSION		Yes
TPROGRAMS.COMPANY	COMPANY		Yes

SELECT DISTINCT

```

COUNT(TPC_PROGRAMS.PC_ID) AS ANZ,
TPROGRAMS.PRODUKT,
TPROGRAMS.SWVERSION,
TPROGRAMS.COMPANY

```

FROM

```

TPC_PROGRAMS
INNER JOIN TPROGRAMS ON (TPC_PROGRAMS.PROGRAMS_ID =
TPROGRAMS.PROGRAMS_ID)

```

WHERE

```

TPROGRAMS.VISIBLE = true

```

GROUP BY

```

TPROGRAMS.PRODUKT,
TPROGRAMS.SWVERSION,
TPROGRAMS.COMPANY

```

ORDER BY

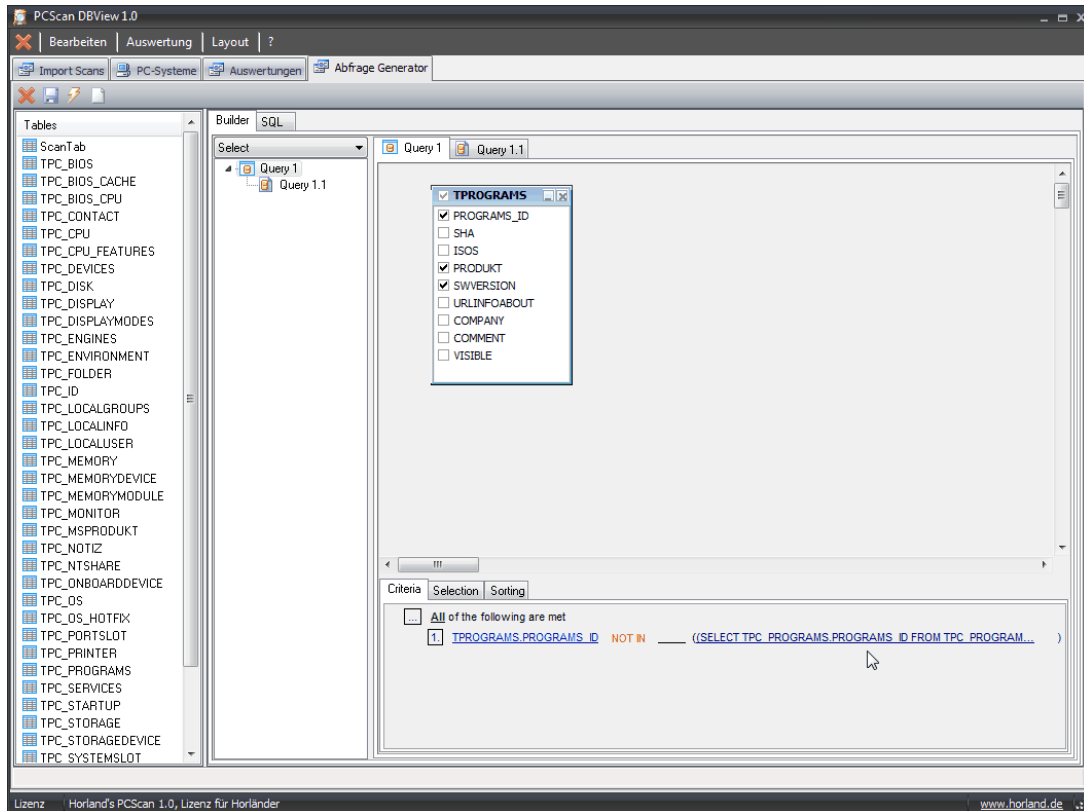
```

TPROGRAMS.PRODUKT

```

Abfrage 4.

Programme ohne Verwendung



SELECT

```
TPROGRAMS.PROGRAMS_ID,  
TPROGRAMS.PRODUKT,  
TPROGRAMS.SWVERSION
```

FROM

```
TPROGRAMS
```

WHERE

```
TPROGRAMS.PROGRAMS_ID NOT IN (SELECT TPC_PROGRAMS.PROGRAMS_ID  
FROM TPC_PROGRAMS)
```